

## IBM SPSS Version 27 Installation and Registration

The following set of instructions will walk you through installing IBM SPSS Statistics on your computer. Version 27 is compatible with all supported Windows operating systems (Windows 7 and newer).

**We suggest that you first obtain the SPSS license code before you begin downloading SPSS.**

Students can obtain the SPSS license code from this link:  
<https://alaureatena.sharepoint.com/sites/walden-university/student-documents/spss/Pages/default.aspx>

Faculty can obtain the SPSS license code from this link:  
<https://laureatena.sharepoint.com/sites/walden-faculty-spss>

You may be prompted to enter your Office 365 credentials.

Simply copy and paste the code into a Word document so that you have it available when prompted to enter it at the end of the installation sequence. You can always enter the code later; however, having it on hand to enter during the installation is much easier.

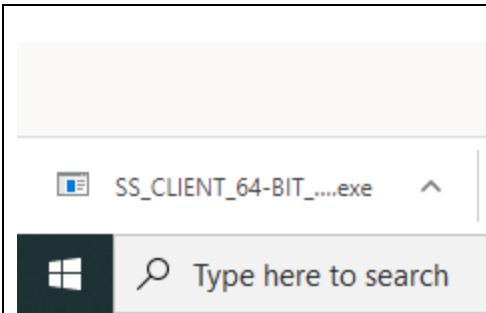
**SPSS Statistics** software installation link for Windows is given below. Version 27 is only supported on 64-bit computers. If your Windows computer is 32-bit, you may install [SPSS v.25](#).

SPSS v27 Windows 64-bit install - [http://mym.cdn.laureate-media.com/2dett4d/software/IBM/SPSS/v27/SS\\_CLIENT\\_64-BIT\\_27.0\\_M\\_W\\_M.exe](http://mym.cdn.laureate-media.com/2dett4d/software/IBM/SPSS/v27/SS_CLIENT_64-BIT_27.0_M_W_M.exe)

This installation requires at least 1GB of free space on your computer. Because of the large size of the installation file, it is recommended that you are on a DSL or better internet connection. Even with a strong internet connection, the installation may still take up to 30 minutes or longer. While the tool is installing, you may continue to work within other applications on your computer.

If you are using a Mac operating system, you may follow these [instructions](#).

**Note:** [Java Runtime Environment](#) must be installed on your computer in order for SPSS to run. If you experience any issues with SPSS or if you are prompted, you may install Java SE Runtime Environment 7u45 from the Oracle website.

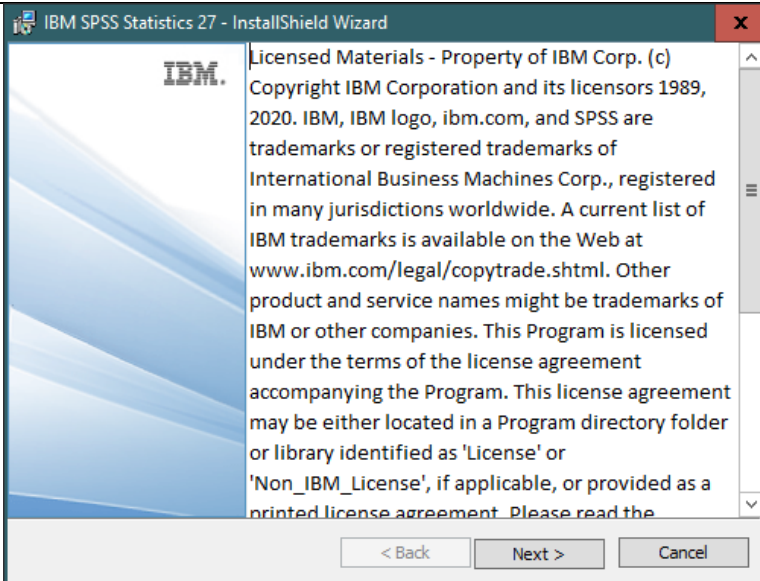


When prompted, save the file in the desired location on your computer. *(Note: Depending on your browser, this screen may look a little different.)*

This step may take up to about 20 minutes if you are on a 128 Kbps internet connection. Once the file has been saved, run the file.

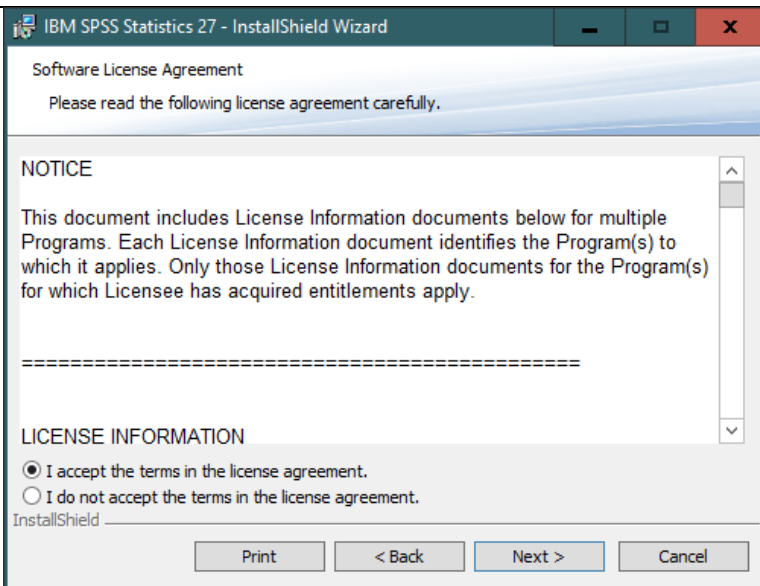
Run the file by double-clicking on it from where it was saved.

If you receive a security warning, click **Run**.

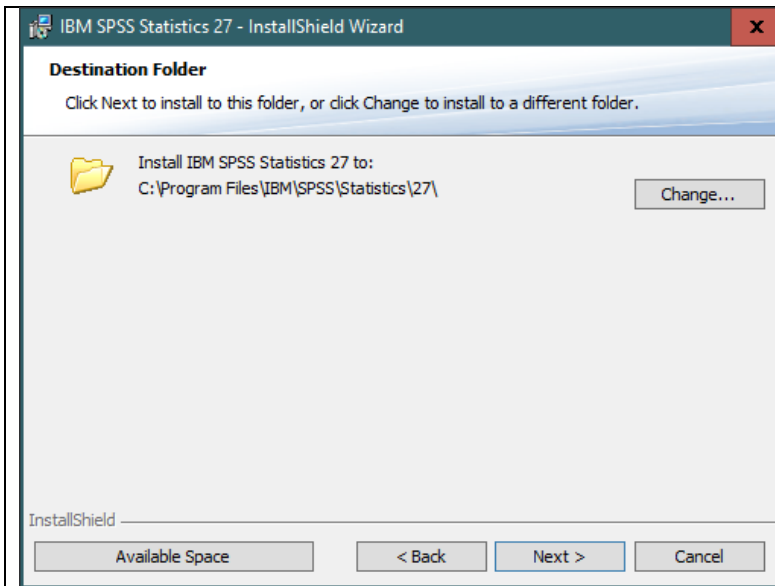


The install wizard will appear.

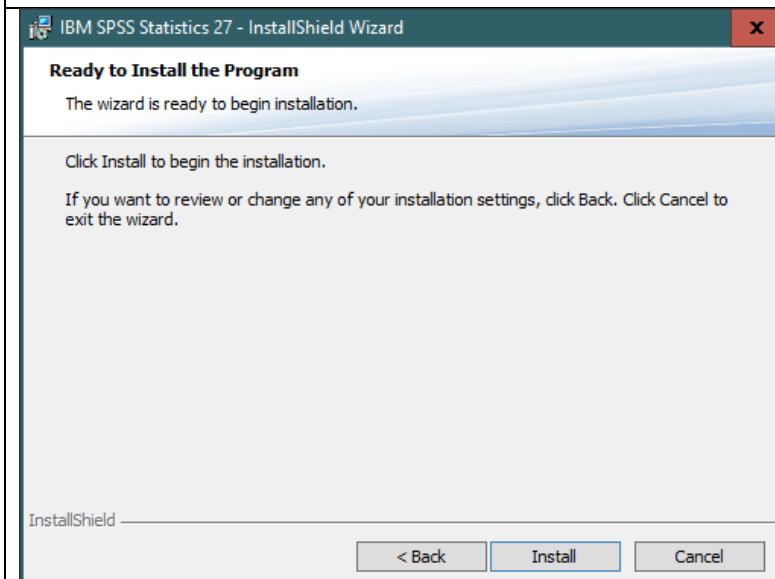
Read through and accept the License Agreement and then click **Next**.



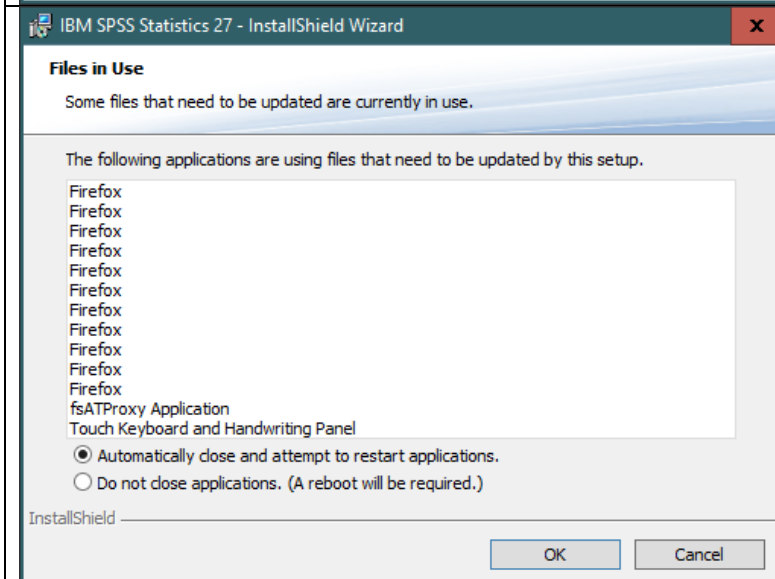
Accept the terms of the license agreement.



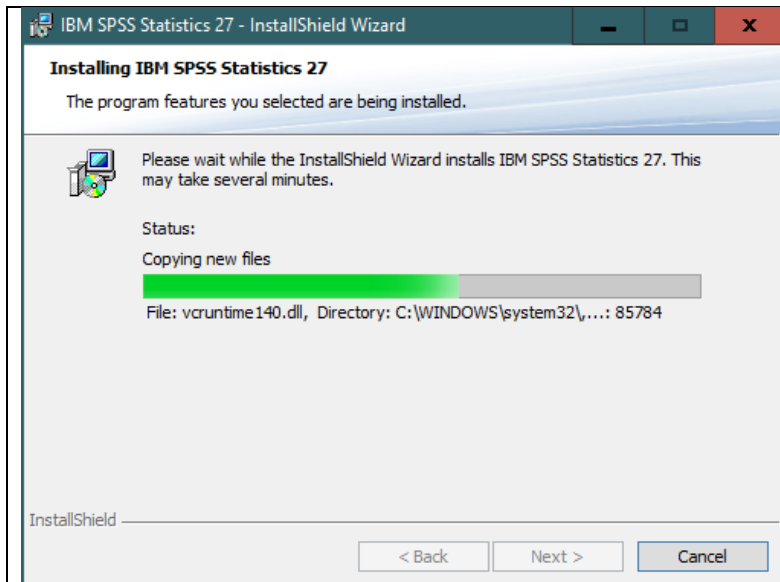
If you would like to change the folder for which SPSS is housed, click the **Change** button. The default location is likely fine. Then click **Next**.



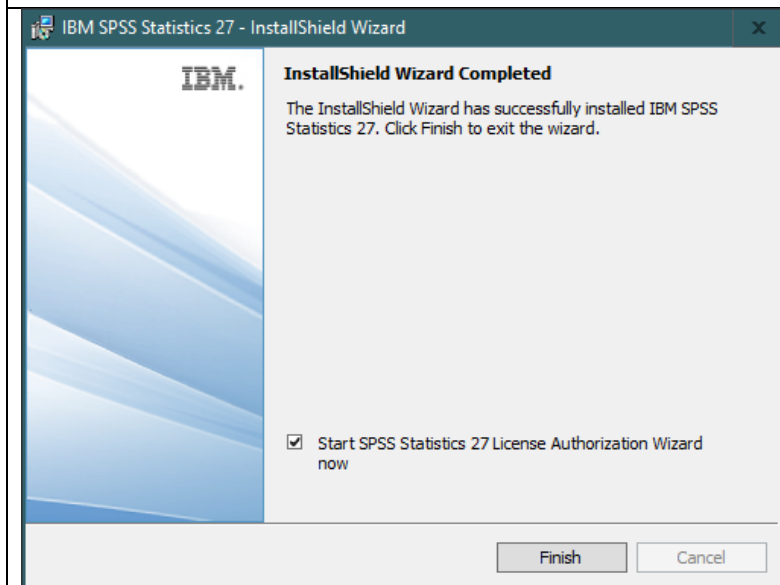
Click **Install**.



You may be prompted to close certain files or applications on your computer. Choose the desired option and click **OK**.

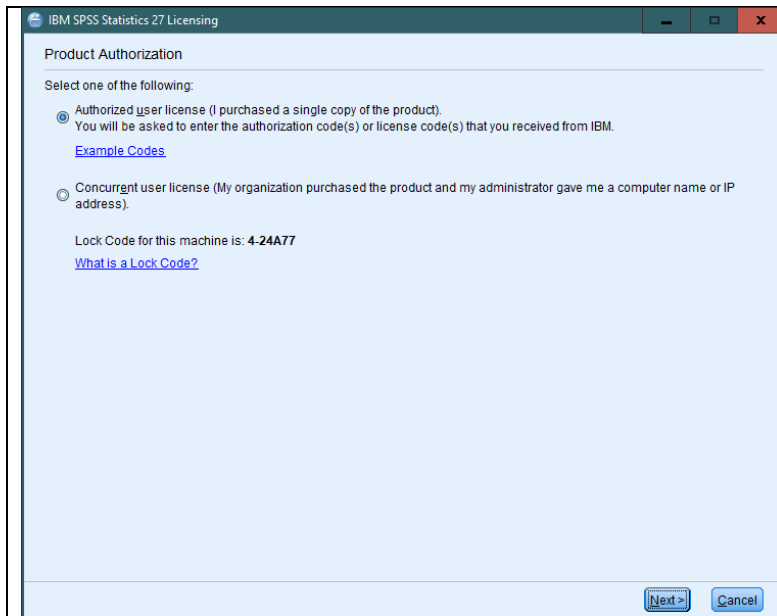


The install process may take a few minutes or longer depending on the strength of your internet connection and the speed of your computer.



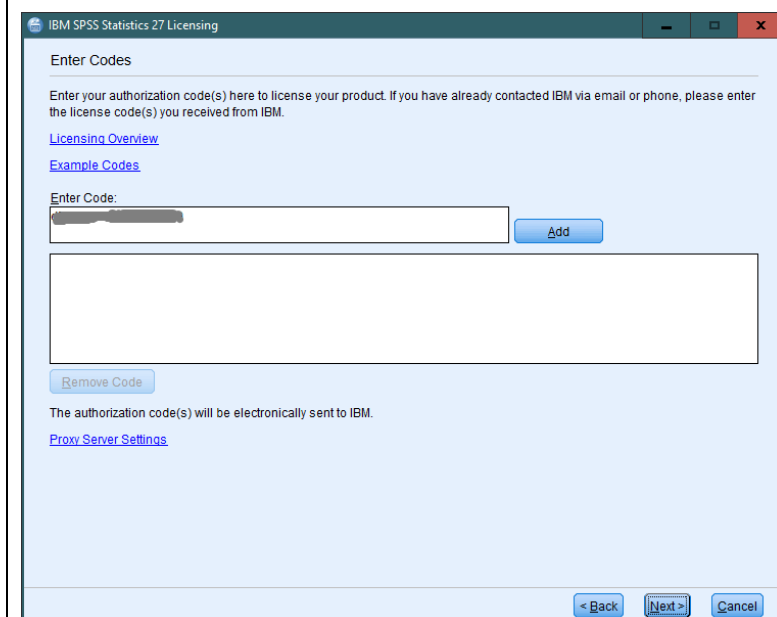
Click **Finish** when the install is done.

When prompted, choose to license your product now

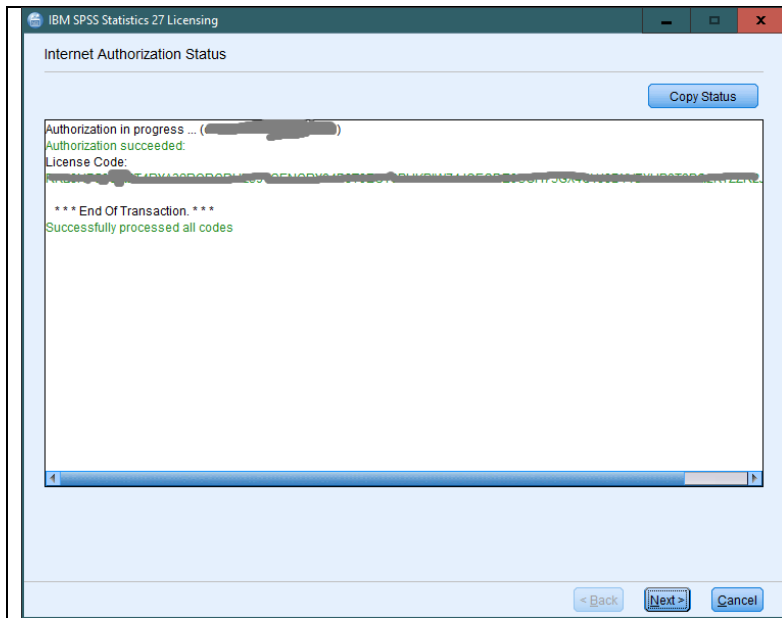


Choose the Authorized user license option.

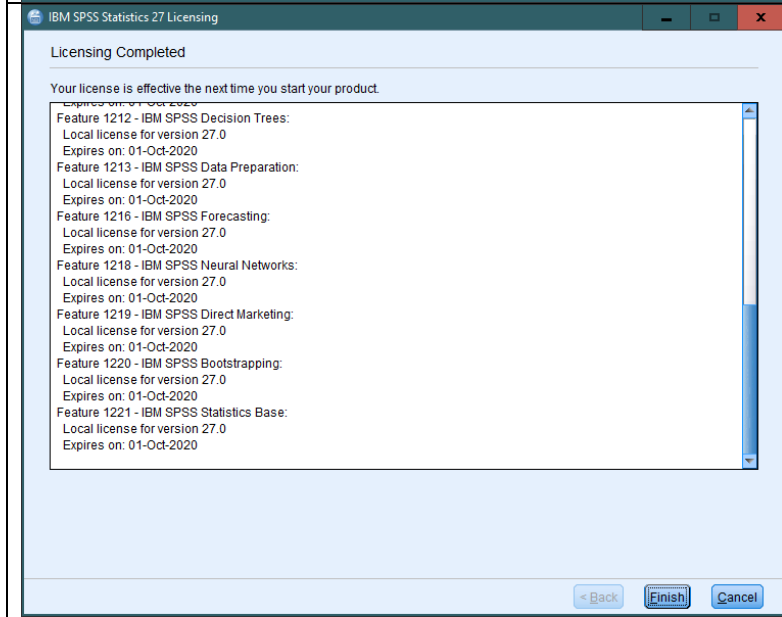
**Note:** If the license wizard does not automatically appear, go to your Start menu and search for SPSS. One of your results should be “SPSS Statistics 27 License Authorization Wizard”. The wizard will walk you through the licensing process.




Paste the license code into the “Enter Code” field and click the **Add** button.



A license confirmation page will appear. Click **Next**.



Click **Finish**.



**IBM SPSS License Code**

While installing SPSS, you will be prompted to enter a license code.

Copy the following code into the "Enter Codes" screen in the SPSS installation wizard - 12212131618192021

This code will be valid through September 30, 2013. At that time, you may re-visit this site for an updated license code.

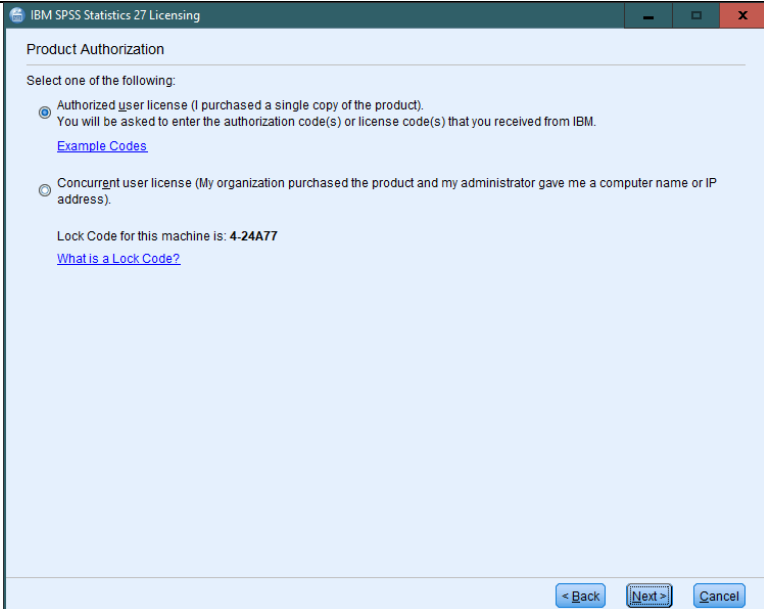
If you haven't already done so, obtain the SPSS license code.

Students may obtain the SPSS license code from this link:  
<https://alaureatena.sharepoint.com/sites/walden-university/student-documents/spss/Pages/default.aspx>

Faculty may obtain the SPSS license code from this link:

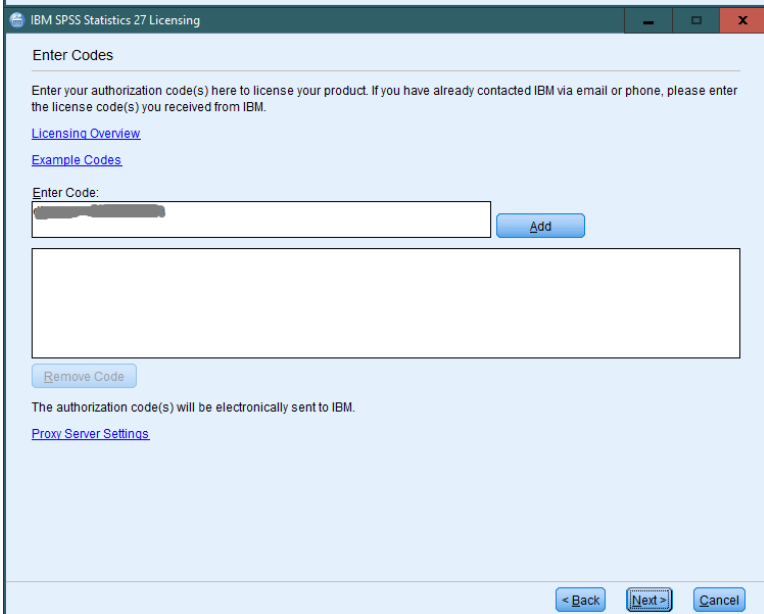
<https://laureatena.sharepoint.com/sites/walden-faculty-spss>

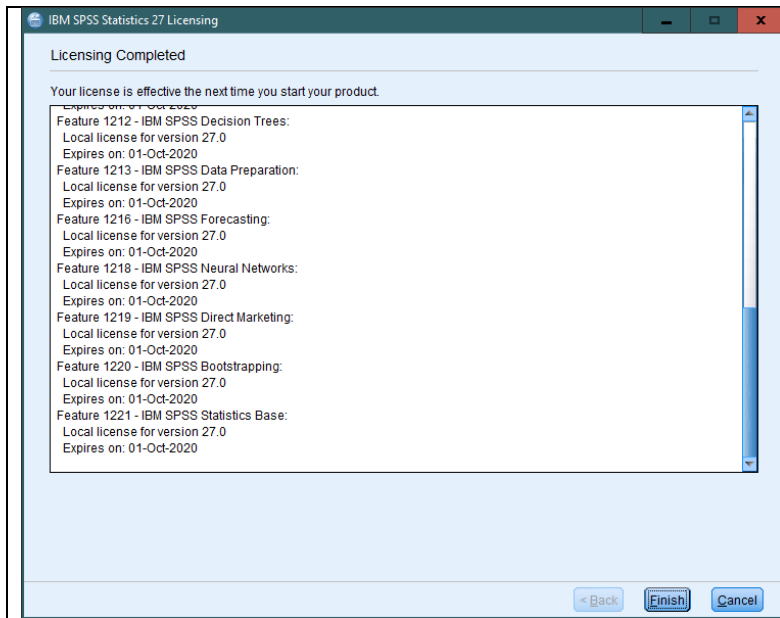
You will need to enter your Office 365 credentials.



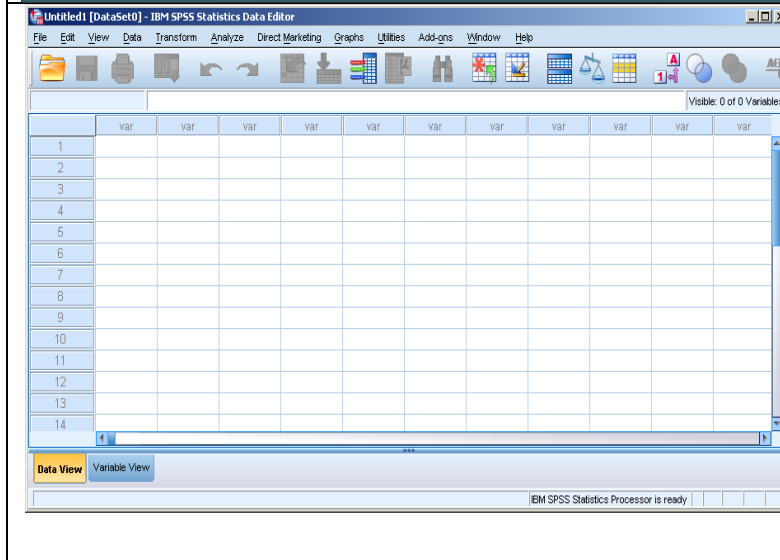
Copy the applicable code and paste it into the **Enter Code** field.

This code will only license the software until September. At that time, you will need to access the license code page referenced above to receive an updated license code. For instructions on how to update your license, access the following link. – [http://mym.cdn.laureate-media.com/2dett4d/Walden/software/IBM/SPSS/Documents/WAL\\_SPSS\\_Updating\\_an\\_Expired\\_License.pdf](http://mym.cdn.laureate-media.com/2dett4d/Walden/software/IBM/SPSS/Documents/WAL_SPSS_Updating_an_Expired_License.pdf)





Click **Finish**. The license will be active the next time you start SPSS.



SPSS will then be ready for use.

Please note: This copy of SPSS is provided to Walden students solely for academic purposes (completing required course work) and is not authorized for commercial or personal application outside of your Walden assignments and research.