

Instructions for Updating an Expired License



IBM SPSS License Code

While installing SPSS, you will be prompted to enter a license code.

Copy the following code into the "Enter Codes" screen in the SPSS installation wizard - 121-45307-21114-1-001

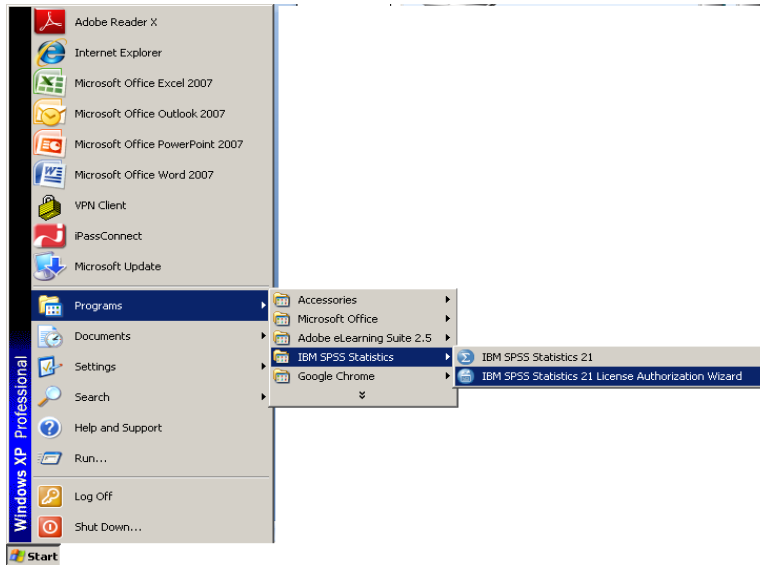
This code will be valid through September 30, 2013. At that time, you may re-visit this site for an updated license code.

Students may obtain the SPSS license code from this link:
<https://alaureatena.sharepoint.com/sites/walden-university/student-documents/spss/Pages/default.aspx>

Faculty may obtain the SPSS license code from this link:
<https://laureatena.sharepoint.com/sites/walden-faculty-spss>

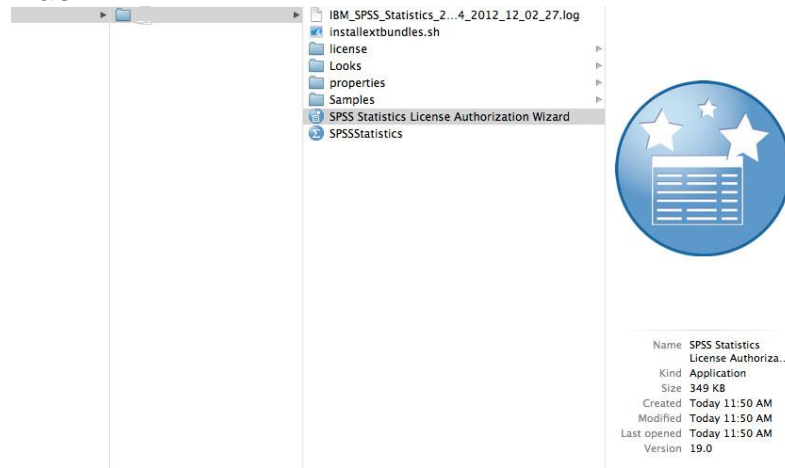
You will need to enter your Office 365 credentials.

Windows



Then access the SPSS License Authorization Wizard. On a Windows computer, this will be under Start → Programs → IBM SPSS Statistics → IBM SPSS Statistics License Authorization Wizard.

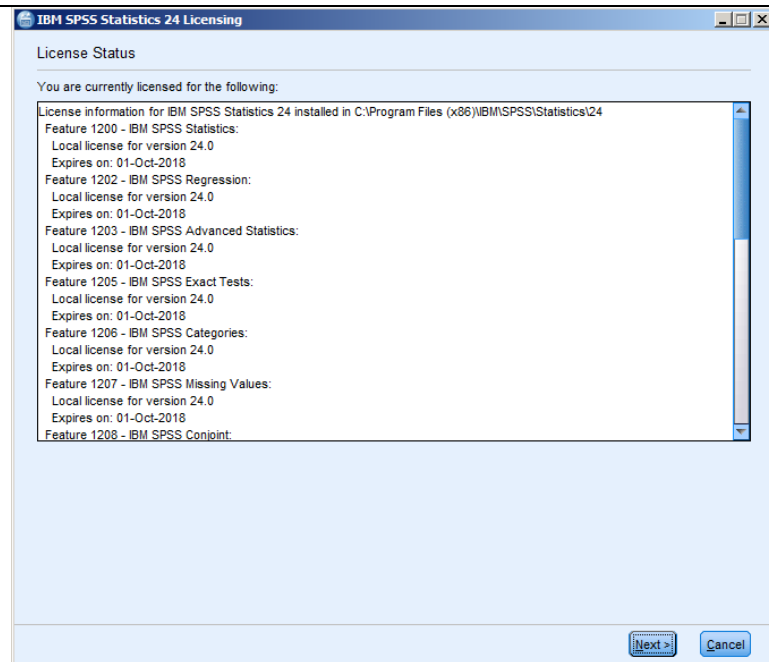
Mac



Click the Launchpad icon in the Dock, or pinch closed with your thumb and three fingers on your trackpad. Then click an app to open it.

You can also type an app's name to find the app in Launchpad, then press the Return key to open it.

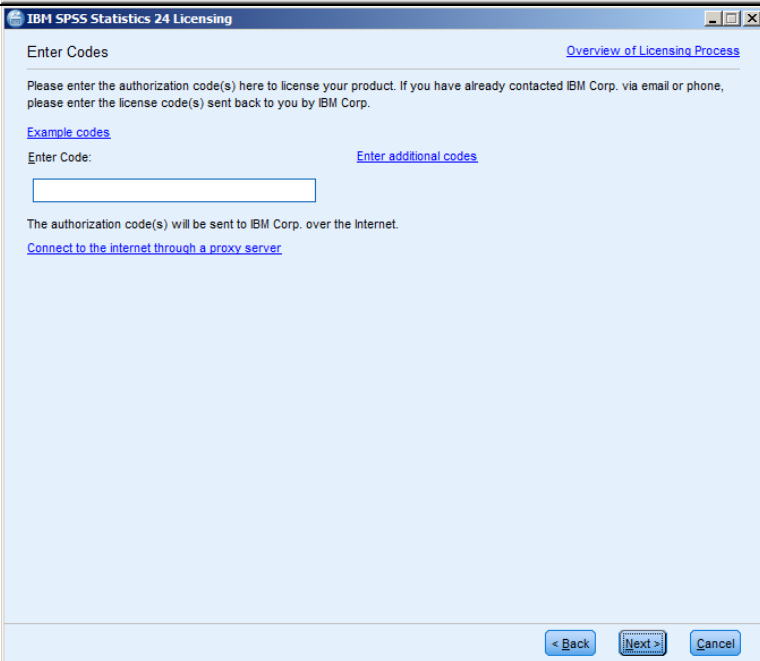
To close Launchpad without opening an app, click the background, or pinch open your thumb and three fingers.



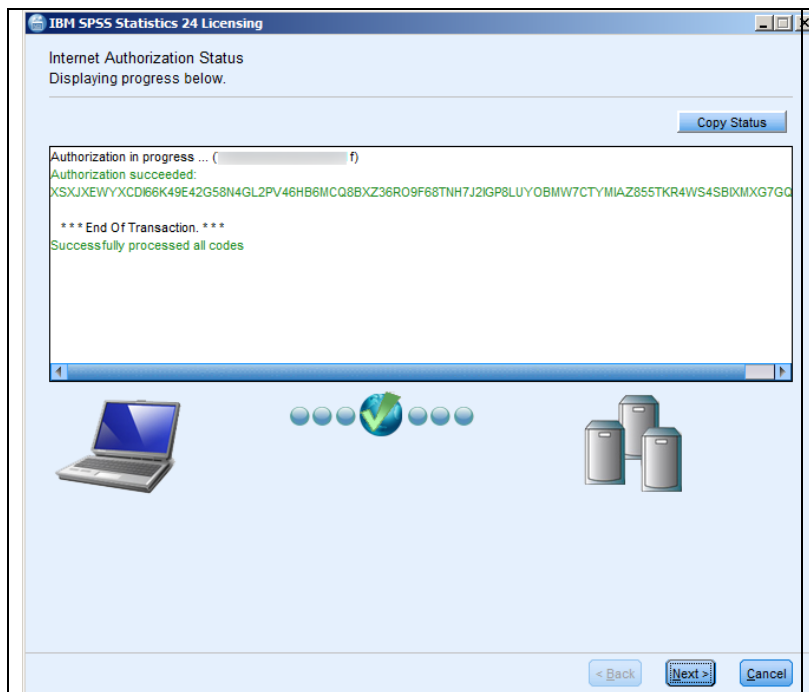
A list of items that you have licensed will display. Click **Next**.



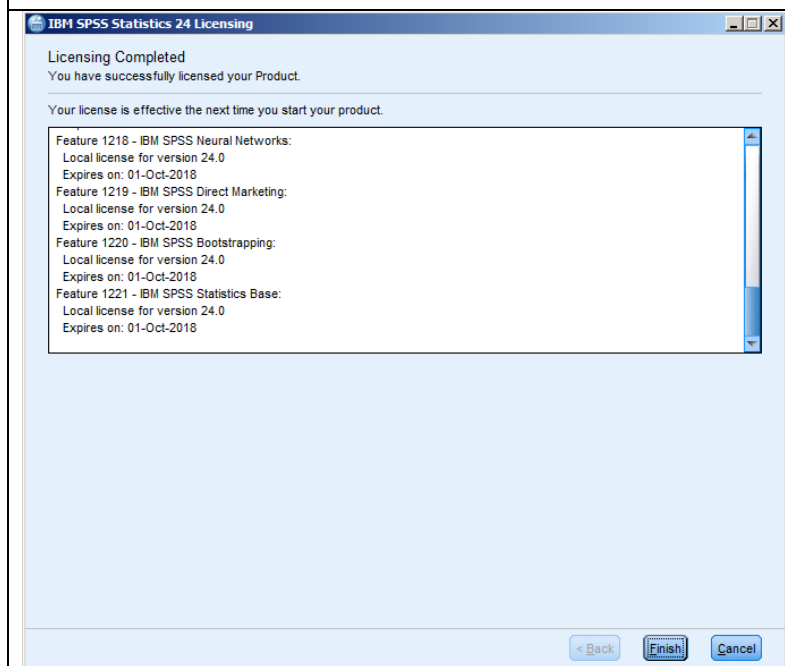
Select "Authorized user license" and click **Next**.



In the "Enter Code" field, paste the license code you copied from the license code site. Then click **Next**.



The code will then be validated.
Click **Next**.



The updated expiration dates
will be displayed.

Click **Finish**.