

Instructions for Updating an Expired License



IBM SPSS License Code

While installing SPSS, you will be prompted to enter a license code.

Copy the following code into the "Enter Codes" screen in the SPSS installation wizard - 121-1500-2011-1118-11897

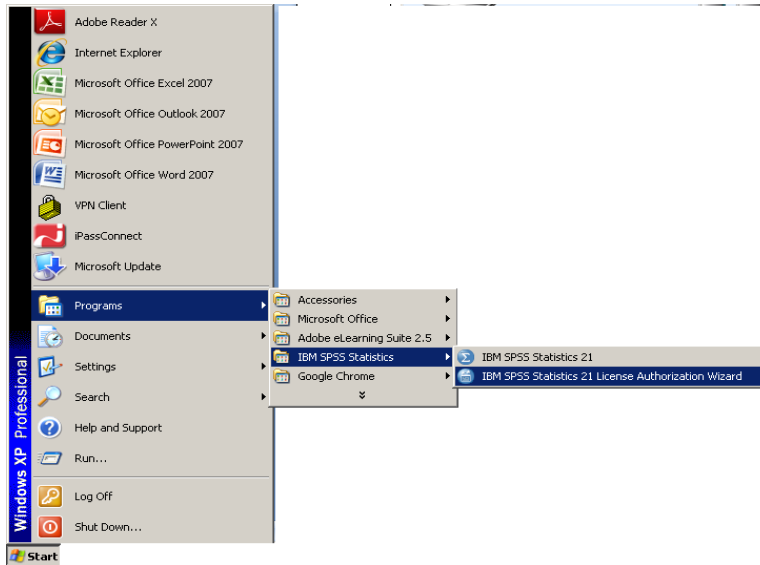
This code will be valid through September 30, 2013. At that time, you may re-visit this site for an updated license code.

Students may obtain the SPSS license code from this link:
<https://alaureatena.sharepoint.com/sites/walden-university/student-documents/spss/Pages/default.aspx>

Faculty may obtain the SPSS license code from this link:
<https://laureatena.sharepoint.com/sites/walden-faculty-spss>

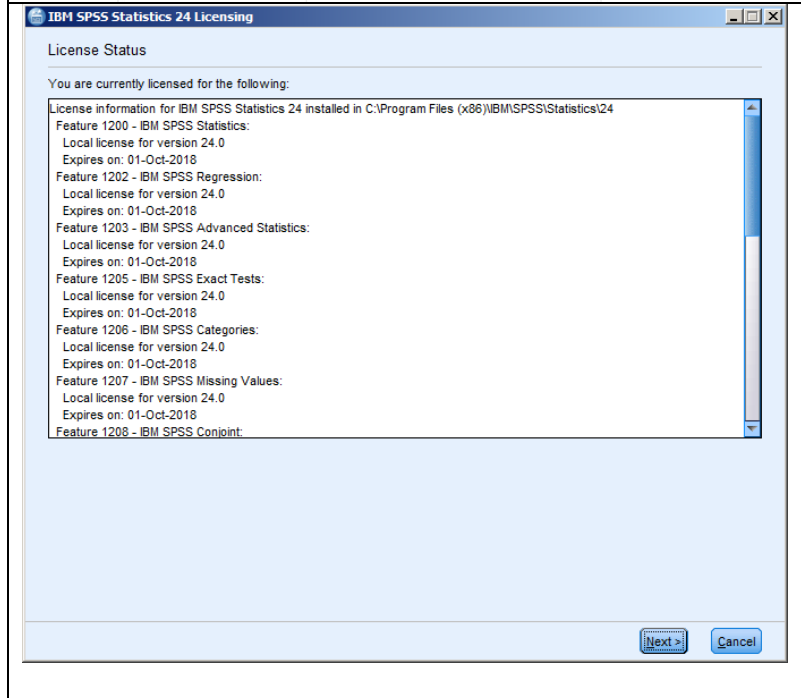
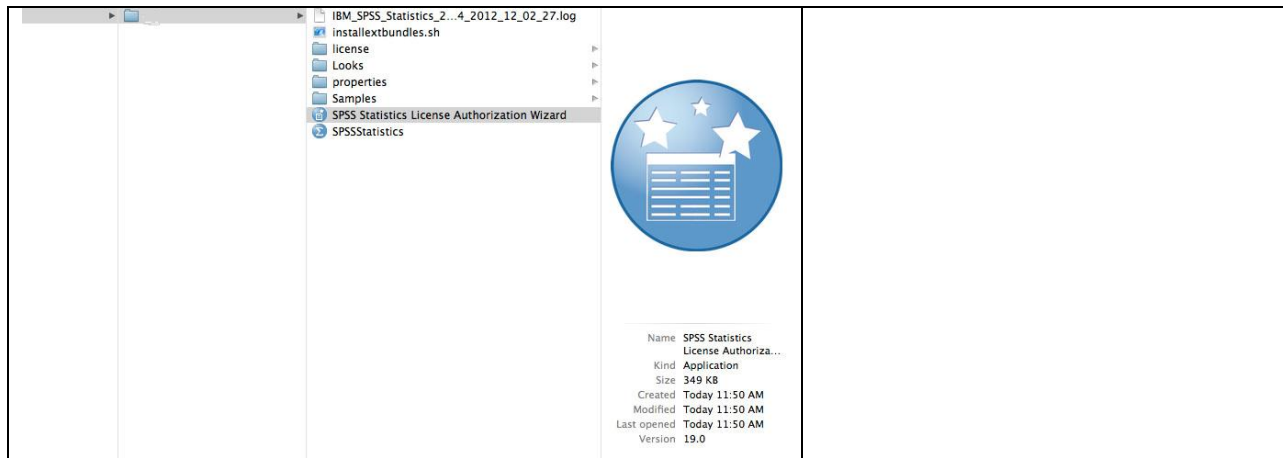
You will need to enter your Office 365 credentials.

Windows



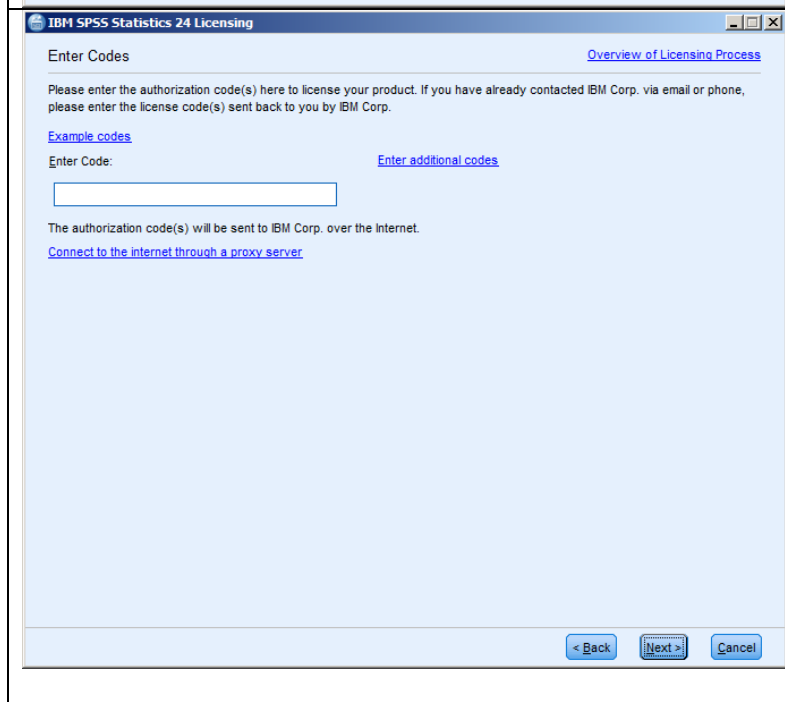
Then access the SPSS License Authorization Wizard. On a Windows computer, this will be under Start→ Programs→IBM SPSS Statistics→ IBM SPSS Statistics License Authorization Wizard.

Mac

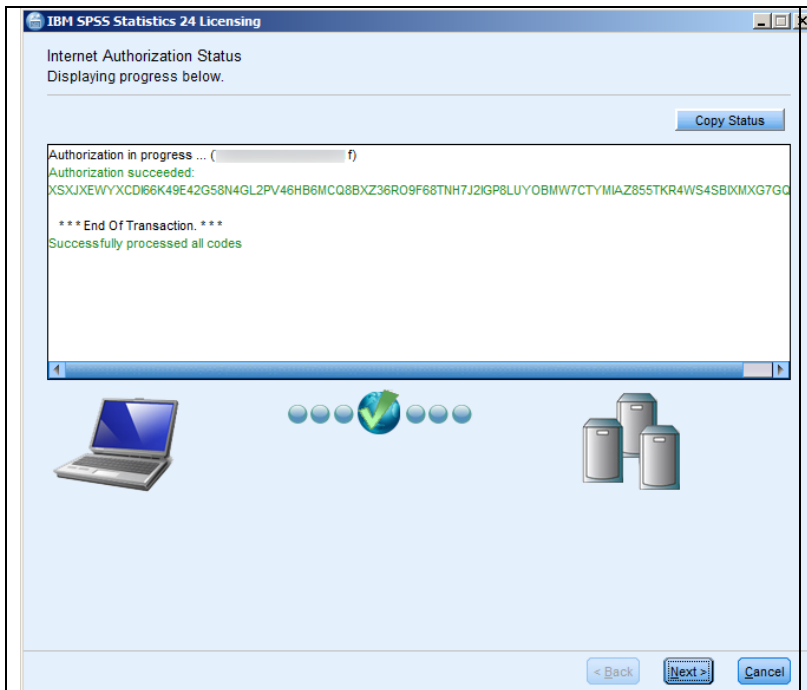


A list of items that you have licensed will display. Click **Next**.

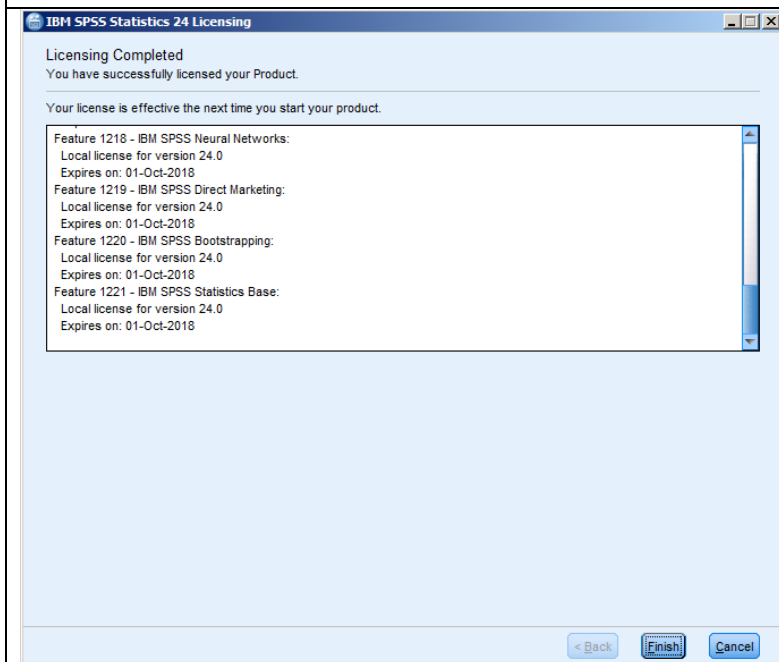
Select "Authorized user license" and click **Next**.



In the "Enter Code" field, paste the license code you copied from the license code site. Then click **Next**.



The code will then be validated.
Click **Next**.



The updated expiration dates
will be displayed.

Click **Finish**.